

STATE OF FLORIDA
 COUNTY OF PALM BEACH
 THIS PLAT WAS FILED FOR
 RECORD AT _____ M.
 THIS _____ DAY OF _____
 A.D. 200 _____ AND DULY RECORDED
 IN PLAT BOOK _____ ON
 PAGES _____ AND _____
 SHARON R. BOCK
 CLERK AND COMPTROLLER
 BY: _____
 DEPUTY CLERK

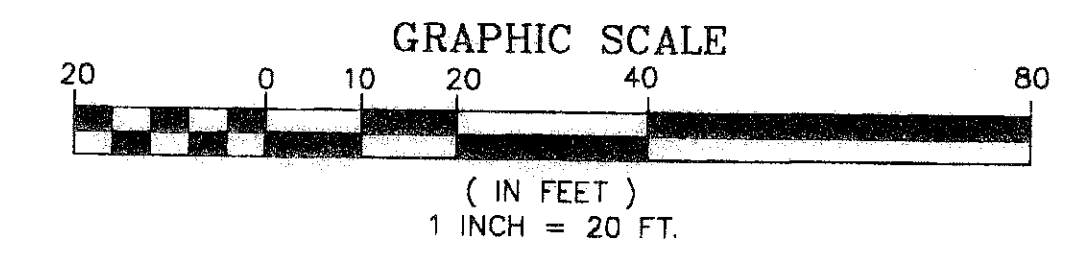
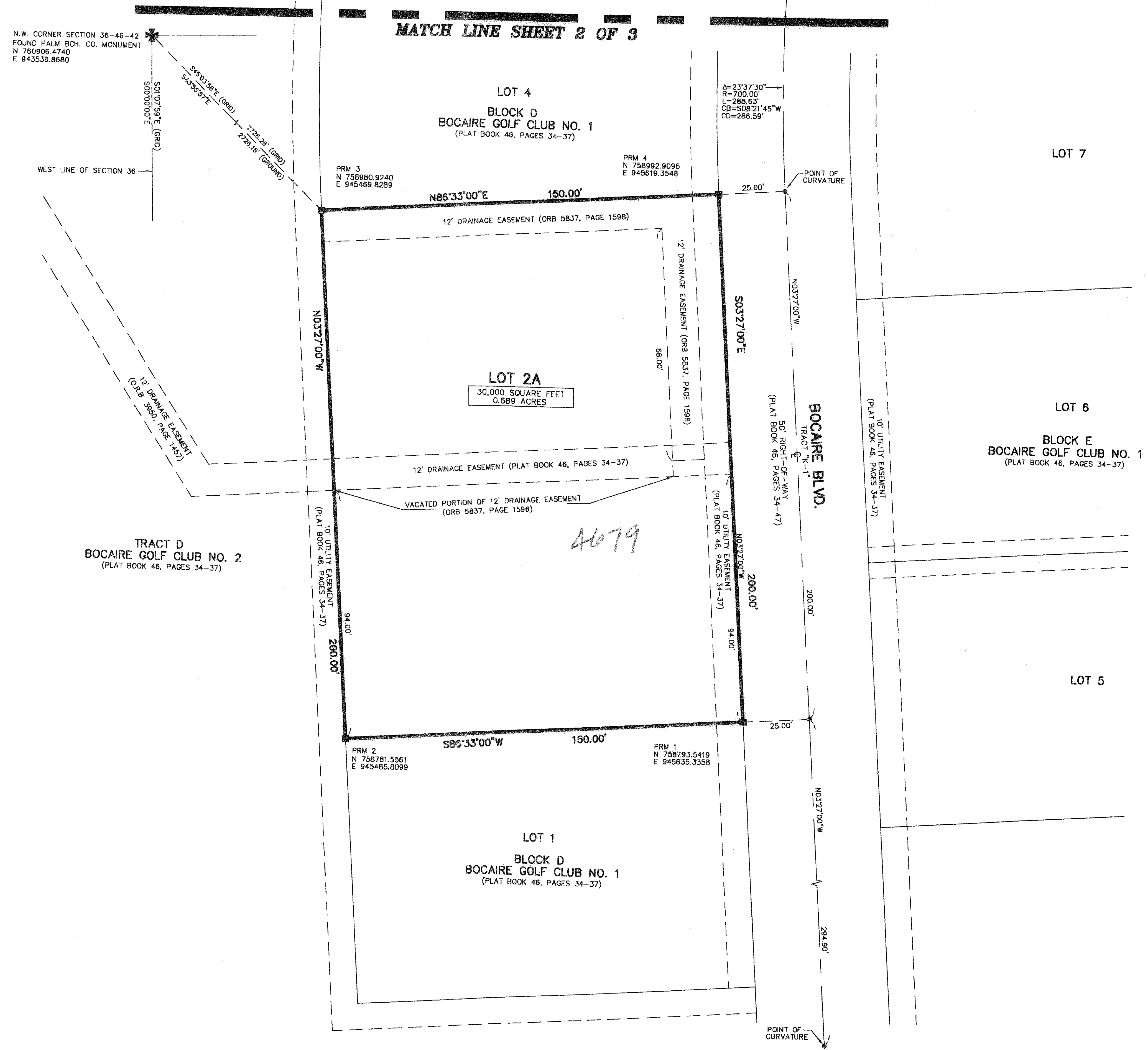
BOCAIRE GOLF CLUB NO. 4

A REPLAT OF LOTS 2 AND 3, BLOCK D, BOCAIRE GOLF CLUB NO. 1,
 AS RECORDED IN PLAT BOOK 46, PAGES 34 THROUGH 37,
 TOGETHER WITH A PORTION OF TRACT "B", BOCAIRE GOLF CLUB NO. 2,
 AS RECORDED IN PLAT BOOK 46, PAGES 38 THROUGH 42 OF THE PUBLIC RECORDS OF PALM BEACH COUNTY, FLORIDA,
 LYING IN SECTION 36, TOWNSHIP 46 SOUTH, RANGE 42 EAST, PALM BEACH COUNTY, FLORIDA

PREPARED BY
 DAVID P. LINDLEY
 OF
CAULFIELD and WHEELER, INC.
 ENGINEERS - PLANNERS - SURVEYORS
 7301-A WEST PALMETTO PARK ROAD, SUITE 100A
 BOCA RATON, FLORIDA 33433 - (561)392-1991
 AUGUST - 2006

N.W. CORNER SECTION 36-46-42
 FOUND PALM BCH. CO. MONUMENT
 N 760906.4740
 E 943539.8680

MATCH LINE SHEET 2 OF 3



NOTES
COORDINATES, BEARINGS AND DISTANCES
 COORDINATES SHOWN ARE GRID
 DATUM = NAD 83 1990 ADJUSTMENT
 ZONE = FLORIDA EAST
 LINEAR UNIT = US SURVEY FEET
 COORDINATE SYSTEM 1983 STATE PLANE
 TRANSVERSE MERCATOR PROJECTION
 ALL DISTANCES ARE GROUND
 SCALE FACTOR = 1.0000368
 GROUND DISTANCE X SCALE FACTOR = GRID DISTANCE
 BEARINGS AS SHOWN HEREON ARE GRID DATUM, NAD 83 1990
 ADJUSTMENT, FLORIDA EAST ZONE.
 COORDINATES SHOWN ON THE CONTROL P.R.M.'S MEET OR
 EXCEED THE LOCAL ACCURACY REQUIREMENTS OF A 2
 CENTIMETER GEODETIC CONTROL SURVEY.

S40°37'20"E (PLAT BEARING) 01°07'59" = BEARING ROTATION
 S41°45'19"E (GRID BEARING) (PLAT TO GRID COUNTER CLOCKWISE)
 NORTH LINE OF TRACT "B"

- SURVEY NOTES:**
- IN THOSE CASES WHERE EASEMENTS OF DIFFERENT TYPES CROSS OR OTHERWISE COINCIDE, DRAINAGE EASEMENTS SHALL HAVE FIRST PRIORITY, UTILITY EASEMENTS SHALL HAVE SECOND PRIORITY, ACCESS EASEMENTS SHALL HAVE THIRD PRIORITY, AND ALL OTHER EASEMENTS SHALL BE SUBORDINATE TO THESE WITH THEIR PRIORITIES BEING DETERMINED BY USE RIGHTS GRANTED.
 - BUILDING SETBACK LINES SHALL BE AS REQUIRED BY CURRENT PALM BEACH COUNTY ZONING REGULATIONS.
 - NO BUILDINGS OR ANY KIND OF CONSTRUCTION OR TREES OR SHRUBS SHALL BE PLACED ON DRAINAGE EASEMENTS, EXCEPT DRIVEWAYS.
 - APPROVAL OF LANDSCAPING ON UTILITY EASEMENTS, SHALL BE ONLY WITH APPROVAL OF ALL UTILITIES OCCUPYING SAME.
 - PRM - INDICATES SET 4" x 4" x 24" PERMANENT REFERENCE MONUMENT MARKED LB 3591
 - LINE'S INTERSECTING CURVES ARE NON-RADIAL UNLESS SHOWN OTHERWISE.
 - "NOTICE" THIS PLAT, AS RECORDED IN ITS GRAPHIC FORM, IS THE OFFICIAL DEPICTION OF THE SUBDIVIDED LANDS DESCRIBED HEREIN AND WILL IN NO CIRCUMSTANCES BE SUPPLANTED IN AUTHORITY BY ANY OTHER GRAPHIC OR DIGITAL FORM OF THE PLAT. THERE MAY BE ADDITIONAL RESTRICTIONS THAT ARE NOT RECORDED ON THIS PLAT THAT MAY BE FOUND IN THE PUBLIC RECORDS OF PALM BEACH COUNTY.
 - BEARINGS SHOWN HEREON ARE RELATIVE TO BOCAIRE GOLF CLUB NO. 2, ACCORDING TO THE PLAT THEREOF, AS RECORDED IN PLAT BOOK 46, PAGES 38-42 OF THE PUBLIC RECORDS OF PALM BEACH COUNTY, FLORIDA. BASED ON THE NORTH LINE OF TRACT "B", BEARING S40°37'20"E.
 - CB- DENOTES CHORD BEARING
 - CD- DENOTES CHORD DISTANCE

REVISION
 BLOCK NO.
 SECTION 36
 TOWNSHIP 46 S
 RANGE 42 E
 DATE 5/22/06
 BY DAVID P. LINDLEY